



Capability Statement

Plumbing & Civil Connection Services

Who We Are

SEQ Pipe & Civil is **your trusted partner** for professional **Plumbing** and **Civil Connection Services** across the Gold Coast and Brisbane.



Our Story

Founded by Mitchell Irvine, SEQ Pipe & Civil was established with nearly two decades of experience in Plumbing and Civil Infrastructure.

Mitchell's expertise spans High-Rise Construction, Civil Works, and Council Infrastructure projects across Brisbane and the Gold Coast. With a deep understanding of complex plumbing systems and the regulatory landscape, Mitchell created SEQ Pipe & Civil as a family-owned business focused on providing Simple, Stress-Free Civil Connections.

Our company's mission is simple: to ensure seamless, reliable connections for Infrastructure projects while providing exceptional customer service. Mitchell and his team are dedicated to navigating the complexities of council regulations, multiple contractors, and tight project deadlines, so your work is completed smoothly, on time, and within budget.

- ✓ Civil Connection Professionals
- ✓ Local Council Accredited
- ✓ 18+ Years Experience
- ✓ Quality Work Assurance
- ✓ Streamlined Experience
- ✓ Safety Guarantee

Our philosophy is demonstrated through a strong belief in what we do, and how we do it.

This is based on our values of **mutual respect, quality workmanship, safety, reliability, teamwork** and **providing on-time performance.**



Our Capabilities



Civil Plumbing & Excavation

We have the resources and capability to take on large scale Civil Plumbing projects from inground works through to practical completion.

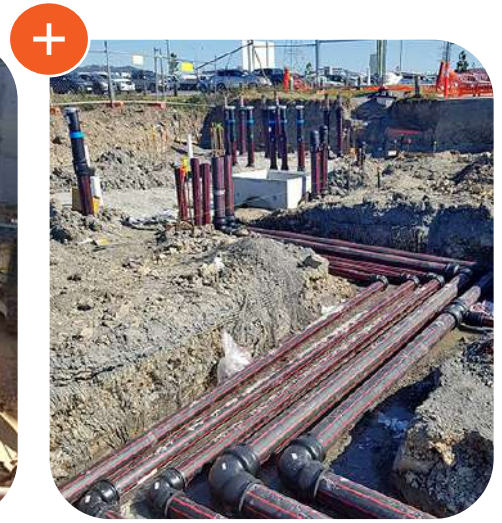
- Sanitary plumbing
- Sewer drainage
- Trade waste
- Stormwater
- Hot, cold water & non-potable water reticulation
- Fire services / hydrants & hose reels
- Pumps
 - Hydrant
 - Potable water boosters
 - Sewerage
 - Rainwater
 - Stormwater
- Council mains infrastructure connections
- Vacuum & rising main



Infrastructure Works

We are competent working with Local Authorities and Principal Contractors to service their Asset Infrastructure Upgrades.

- Stormwater mains & concrete structures
- Sewer mains & property connections
- Water mains & valve assemblies
- Fire mains & booster assemblies
- Manhole construction
- Water meter assemblies
- Major & minor works to Council Infrastructure
- Safe excavation & trench support systems



Industrial Developments

Experienced in Hydraulic and Civil Works for large Industrial Sheds, Shopping Centres, Service Stations, and similar projects, ensuring quality and compliance.

- Stormwater mains & concrete structures
- Sewer mains & property connections
- Water mains & valve assemblies
- Fire mains & booster assemblies
- Manhole construction
- Water meter assemblies
- Major & minor works to Council Infrastructure
- Safe excavation & trench support systems

Our Point of Difference

We **simplify Infrastructure** and **Property Connections** to ensure **your projects stay on track and on time.**



Why work with us?

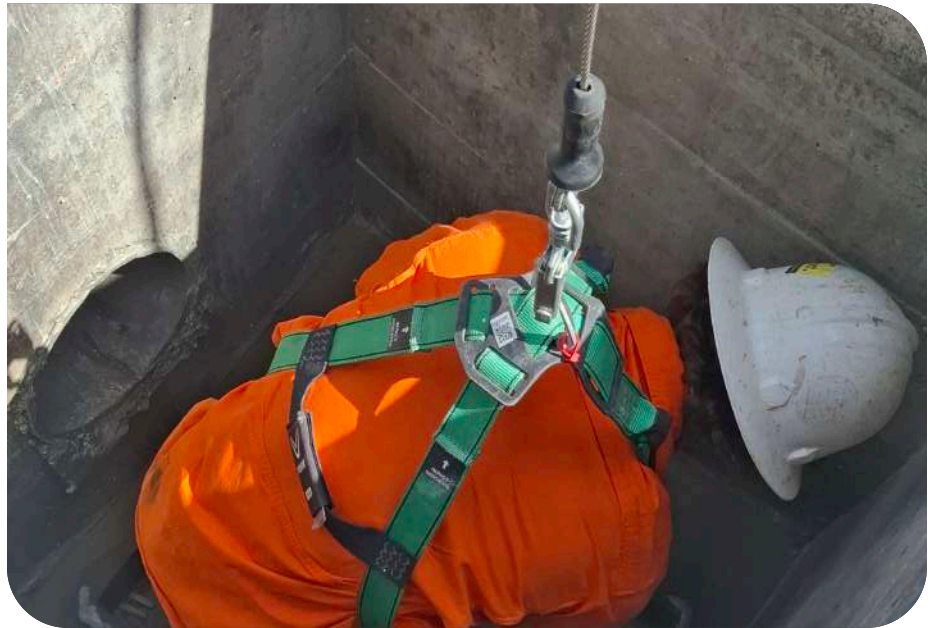
At SEQ Pipe & Civil, we understand that working with Council Infrastructure, coordinating with multiple contractors, and managing demanding timelines can be challenging. Our team takes pride in making the process as efficient and straightforward as possible, so you can focus on the bigger picture. We handle all aspects of Civil Plumbing and Infrastructure with expertise, precision, and professionalism.

With extensive experience, we're equipped to manage even the most complex projects; delivering high-quality outcomes and ensuring compliance at every step. From initial consultation to project completion, you can rely on us to keep your project on track and within budget.



Health & Safety

At SEQ Pipe & Civil we are committed to implementing and continuously improving our industry-leading work practices to ensure the health, safety and well-being of our employees, clients, the broader community and the environment.



Workplace Health & Safety

Our Workplace Health and Safety (WHS) Policy is based on a belief that the wellbeing of people employed at work, or people affected by our work, is our paramount consideration.

People are our most important asset and their health and safety is our greatest responsibility.

The public, including contractors and visitors, shall be given equal priority to that of our employees.

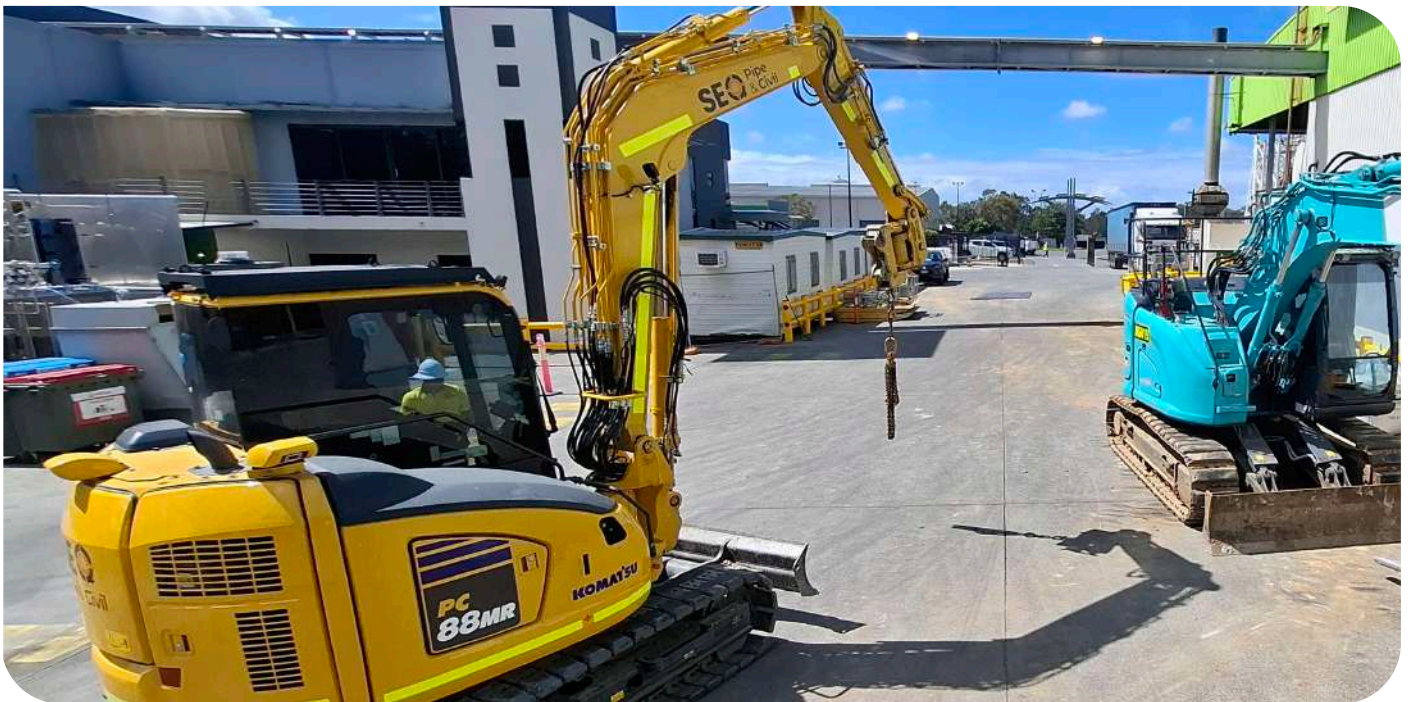
Our WHS policy demonstrates our commitment to:

- Achieve an accident-free workplace.
- Comply with the requirements of WHS Acts, Regulations, Codes and relevant industry standards.
- Ensure WHS is considered in all planning and work activities.
- Involve employees in the decision making processes through a continuous program of regular communication, consultation and training to ensure they work in the safest possible manner.
- Manage all potential dangers in the workplace through hazard identification, risk assessment and risk control.
- Provide effective injury management for all employees.
- Ensure that the work team is totally committed to achieving these objectives.

Our People

Mitchell Irvine - Director

Mitchell brings over 18 years of experience to the industry, with expertise across high-rise construction, civil works, and council infrastructure projects throughout Brisbane and the Gold Coast. He has a deep understanding of complex plumbing systems and the regulatory landscape, which, combined with his strong, lasting relationships with local councils, ensures smooth project delivery. Mitchell has also worked alongside his Project Manager, Dylan, for more than 15 years, building a highly effective and trusted partnership.



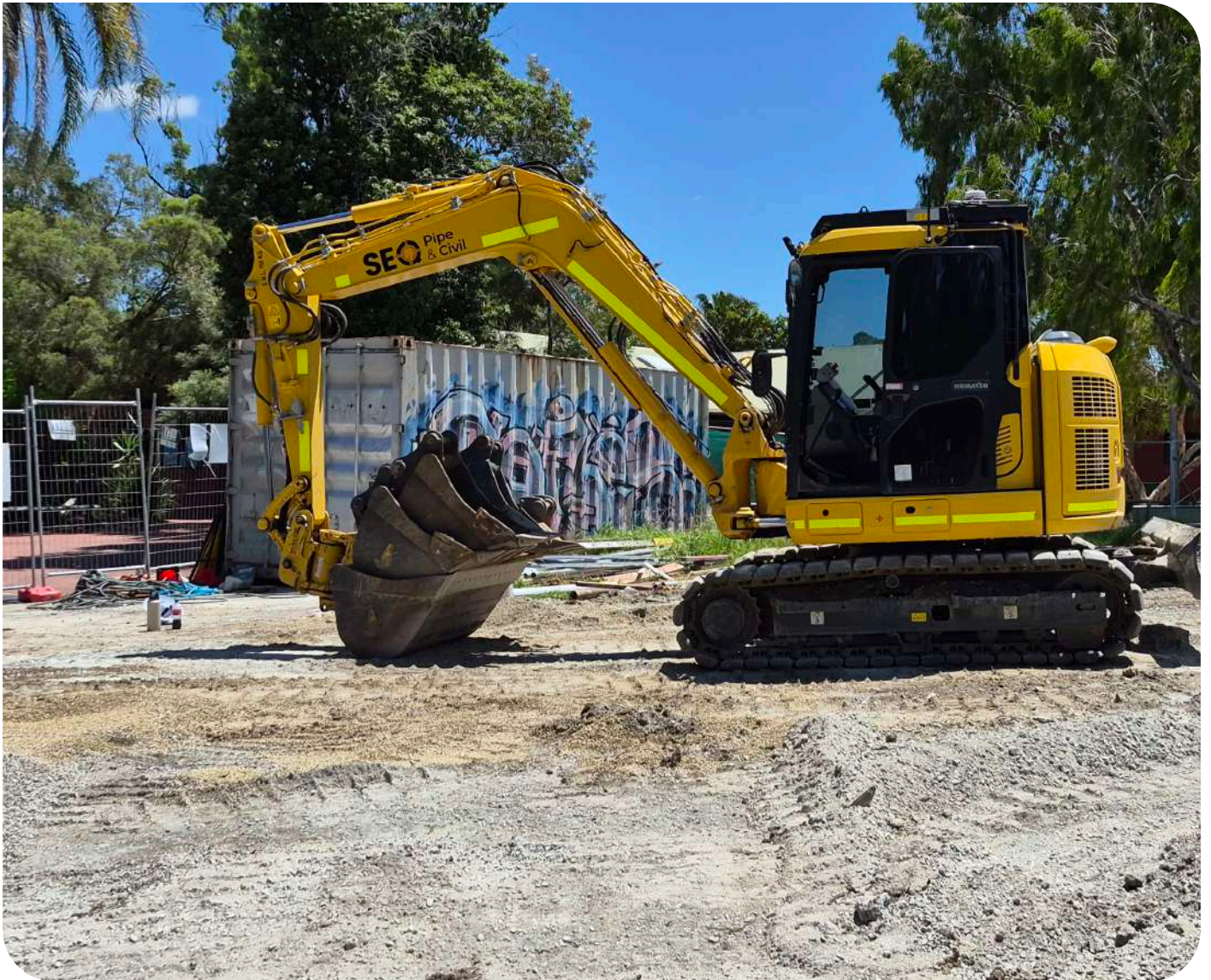
Dylan McGrath - On-Site Project Manager

Dylan brings over 18 years of experience to the industry, with expertise in high-rise construction, civil works, and council infrastructure projects throughout Brisbane and the Gold Coast. He is dedicated to building strong client relationships by prioritising client satisfaction and consistently meeting project goals. Dylan's hands-on approach ensures that all works run smoothly, are completed on time, and stay within budget, making him a trusted and reliable leader on every project.

Cheyne Collier - Project Manager

Cheyne brings over 10 years of experience in civil infrastructure and rehabilitation, with a strong focus on water and wastewater works for local councils and major contracts. He is highly process-driven, with a keen focus on cost tracking and delivering value for money for clients. Cheyne thrives on the day-to-day challenges of civil works and the reactive nature of projects, consistently pivoting where required to keep works on schedule. His experience in project management and client relations spans numerous council projects across the Gold Coast, Logan, and Tweed Shire, making him a reliable and results-focused member of the team.

Our People Contd.



Carla Irvine - Office Manager

Carla is a skilled relationship manager with extensive experience gained across multiple industries. She works closely with staff and suppliers to ensure strong communication and seamless operations. With a background in administration, marketing and design, Carla brings a versatile skill set to the team and is always ready to assist wherever needed, helping to support both project and business success.

Plumbers, Pipe Layers & Labourers

In addition, we have a skilled team of site-based plumbers, pipe layers and labourers who support daily operations and help drive project goals. Their hands-on expertise ensures works are completed safely, efficiently, and to a high standard on every site.

Contact Us

SEQ Pipe & Civil Pty Ltd

Elanora, QLD 4221

Mitchell Irvine - Director

Email: mitch@seqpc.com.au

Phone: 0414 950 419

General Enquiries

Email: office@seqpc.com.au

ABN: 31 680 912 225

QBCC Licence: 15483181